



Multiple Application Platform Server

MAPS 6.10.1 Release Guide

Product version 6.10.1

Last updated 5/3/2023

Trademark, Publishing Statement, and Copyright Notice

© 1998-2023 Evisions. All rights reserved.

This software and related documentation are provided under a license agreement containing restrictions on use and disclosure and are protected by intellectual property laws. No part of this document may be reproduced, stored in or introduced into a retrieval system, or transmitted in any form or by any means (electronic, mechanical, photocopying, recording, or otherwise), or for any purpose, without the express written permission of Evisions.

The information contained herein is subject to change without notice and is not warranted to be error-free. Product features referenced herein for a period of time may not match product contents. Evisions does not warrant that the functions contained in the software will meet your requirements or that the operation of the software will be uninterrupted or error free. Evisions reserves the right to make changes and/or improvements in the software without notice at any time.

This software and documentation may provide access to or information on content, products, and services from third parties. Evisions and its affiliates are not responsible for and expressly disclaim all warranties of any kind with respect to third-party content, products, and services. Evisions and its affiliates will not be responsible for any loss, costs, or damages incurred due to your access to or use of third-party content, products, or services. Evisions does not endorse the content or developer of any products or web sites mentioned.

All information in this guide is designed for instructional purposes only. Evisions makes no guarantees regarding the accuracy or performance of any techniques used in this guide. Software configurations and environments may vary, and some techniques used in this guide may not operate efficiently under all configurations. This guide may contain examples of various technologies or products, which are the sole property and responsibility of their creators.

Trademarks are the property of the respective owners for any products mentioned herein.

Table of Contents

- What's New in MAPS 6.10.1?** **4**
- MAPS Updates 4
- Product versions 4
- Installation 4
- 1. Prepare test environment and ensure current backup 4
- 2. Check for updates 4
- 3. Allow update process to complete 5
- 4. Verify the latest version is installed 5
- Delivery Queue** **6**
- MAPS 6.10.1 Release Notes** **7**
- Getting Help** **8**
- Can't find what you're looking for? 8

What's New in MAPS 6.10.1?

Evisions is pleased to announce the release of MAPS version 6.10.1, which includes the following changes:

- Added support for out-of-network printers and email servers.
- New Delivery Queue section in MAPS Config for management of out-of-network jobs.
- Additional enhancements and resolved issues.

We appreciate the feedback received from all of our users. Our products would not be what they are today without your continued support. If you have any comments or suggestions, please do not hesitate to [open a case with the HelpDesk](#) and let us know.

MAPS Updates

MAPS 6.10.1 is an update to the MAPS service and MAPS Config. You should upgrade both components concurrently.

Product versions

The latest versions of MAPS included in this release are:

- MAPS service 6.10.1.2641 / MAPS Config 6.10.1.1479

Installation

1. Prepare test environment and ensure current backup

We highly recommend installing updates in a test environment before applying them to your production environment. You should make sure that a current backup is available in case of any unforeseen issues. To create a full backup of your MAPS environment, go to the **Server -> Backups** screen in MAPS and click **Backup Now**.

2. Check for updates

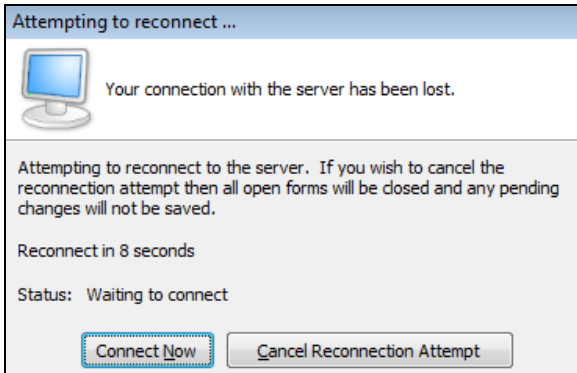
Click the **Check for Updates** button in MAPS Config to view available updates.

If you need to apply updates prior to the 6.10.1 update, please refer to the appropriate [release guide\(s\)](#) before proceeding.

It is possible to apply updates when users are on the system; however, to avoid the possibility of losing unsaved work we recommend applying updates during off hours.

[3. Allow update process to complete](#)

When applying updates to the MAPS service you will be temporarily disconnected from the server:



The update process may take a few minutes to complete. **Do NOT cancel the reconnection attempt or manually restart the server.** You will automatically be reconnected to the server once the update has been applied.

[4. Verify the latest version is installed](#)

To ensure that you are on the most current version, continue clicking the **Check for Updates** button and applying the updates until no new updates are available.

Please Provide Us with Your Feedback!

As always, we welcome any [feedback or suggestions](#) you may have. We very much appreciate your thoughts and suggestions, so please keep the great ideas coming!

Delivery Queue

The **Delivery Queue** allows you to keep track of out-of-network jobs sent by cloud-based installations of MAPS. If all jobs have been sent as intended, this list will be empty. MAPS will initially attempt to send a job a maximum of five times (each attempt will occur one hour after the previous attempt). After the fifth failed attempt the job will be held in the queue until processing is manually reattempted (this can be done via the right click menu or with the CTRL+H keyboard shortcut), or the job is deleted from the queue. The date and time a job is scheduled to be processed is listed in the **Date to Send** column.

Job ID	Status	Attempts	Date Created	Description	Date to Send	Error
7861		0	1/24/2023 12:06:27 PM	[Config] Test email (On-prem Email Server)	1/24/2023 12:06:27 PM	
7860		0	1/24/2023 12:05:48 PM	[Config] Test print (On-prem HP Printer)	1/24/2023 12:05:48 PM	

- **Job ID** - The job ID number.
- **Status** - The state of the job. Jobs with the **Hold** status will not be executed by the Evisions Delivery App. After five failed attempts the job status will be set to "Hold".
- **Attempts** - The number of attempts made to execute the job.
- **Date Created** - The date the job was created.
- **Description** - Identifies the parameters for a job. This may include the application, process, environment, etc.
- **Date to Send** - The date and time the job is scheduled to be executed. If any errors occur, the date to send will be updated.
- **Error** - Identifies any errors that may have occurred while processing a job.

MAPS 6.10.1 Release Notes

MAPS Service 6.10.1.2641 / MAPS Config 6.10.1.1479

MAPS

Enhancements

Area	Description	Issue number
BannerSaaS	Added the Delivery Queue in order to view items that are queued for processing by out-of-network printers or email servers.	MAPS-3022
Configuration	Added an out-of-network check box option to support printers and email servers in cloud-based MAPS installations.	MAPS-2571

Resolved Issues

Area	Description	Issue Number
Authentication	In MAPS 6.10.0, application clients were not prompting users to change their passwords when they were flagged in MAPS as needing to change their password at next logon.	MAPS-3463

Getting Help

For information on using the software, please refer to the product Help, which contains detailed information on all aspects of the product.

If you are having problems with the installation or configuration, you can search our [support site](#), which includes a knowledge base of common issues. If you are unable to find the solution, submit a HelpDesk request with a detailed explanation of the problem you are experiencing.

Please do not hesitate to contact the Evisions HelpDesk if any questions or problems arise. We are here to help you and want to ensure your success.

Can't find what you're looking for?

We would love to make our documentation better! If you have a moment to let us know what we missed or how we can make the help more useful, please email us at TechDocs@evisions.com.